



JEANERETTE LANDMARK SOCIETY

NEWSLETTER

VOLUME NO. 1, ISSUE No. 5

December 2003

NEW BOARD OF DIRECTORS MEET at Yellow Bowl



Rear row, from left: Hugh Junca, Mary K. Allain, Tommy Granger, Ray Allain, Jacques Larroque; Front row, from left: Peggy Parker, Dana Bourgeois, George McJunkins, Pat O'Brien, Peter Patout.

The new Board of Directors of the Landmark Society, elected at the annual meeting in September, met at the Yellow Bowl Restaurant in November. The meeting was hosted by Allain and Bellefontaine and was a combination dinner and business meeting. Committee assignments were finalized and reports on the status of business of the Society were heard. New Committee membership is as follows: Membership Chairman - Peggy Parker, Asst. Chair - Jacques Larroque; Fundraising Chairman - Tommy Granger, Asst. Chair - George McJunkins; Grants & Education Chairman - Mary K. Allain, Asst. Chair - Gail Garcia; Publicity Chairman - Ray Allain, Asst. Chair - Peggy Parker; Museum Planning & Acquisitions - Chairman - Dana Bourgeois, Asst. Chair - Peter Patout; Home Restoration & Construction Chairman - George McJunkins, Asst. Chair - Arthur Verret; State & Local Government Assistance Chairman - Arthur Verret, Asst. Chair - Ray Allain; History & Documentation Chairman - Peter Patout, Asst. Chair - Mary K. Allain; Finance Chairman - Jacques Larroque, Asst. Chair - Ray Allain.

Officers elected for the new term were President - Ray Allain; Vice President - Tommy Granger; Secretary - Peggy Parker; and Treasurer - Jacques Larroque.

The Board members all had something to contribute and there was much enthusiasm about the plans for the coming year.

MAIN STREET LOT ACQUIRED BY LANDMARK SOCIETY

The now vacant lot on the corner of Main and Henkle Streets, formerly occupied by a filling station, has been acquired by the Landmark Society. The effort to acquire the lot has been ongoing since the inception of the project and acquisition of the lot was considered crucial to the success of the project. The Hewes home was originally built on the lot and later moved to its present location, so the integrity of the original homesite has been restored.



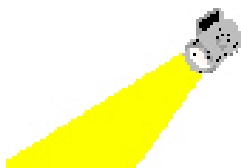
Hewes House - Circa 1950. Showing the original location of the house adjacent to Main Street.

Acquisition was accomplished through the generosity of First National Bank of Jeanerette, which donated mortgage notes it held on the property having a balance due of \$48,572.20. Title to the property was acquired by donation from the previous owners, Charles and Camille Robicheaux. The legal work for the acquisition was performed courtesy of Allain & Bellefontaine, and the total cost of acquisition was under \$100.

Preliminary plans for development of the project propose use of the lot for a landscaped entrance way and parking. The iron fence and concrete fence posts shown in the photo above will be recreated to match the original and will surround the entire lot. Acquisition and development of the lot will not only ensure the historical integrity of the site but will also provide much needed facilities for access and use of the home.

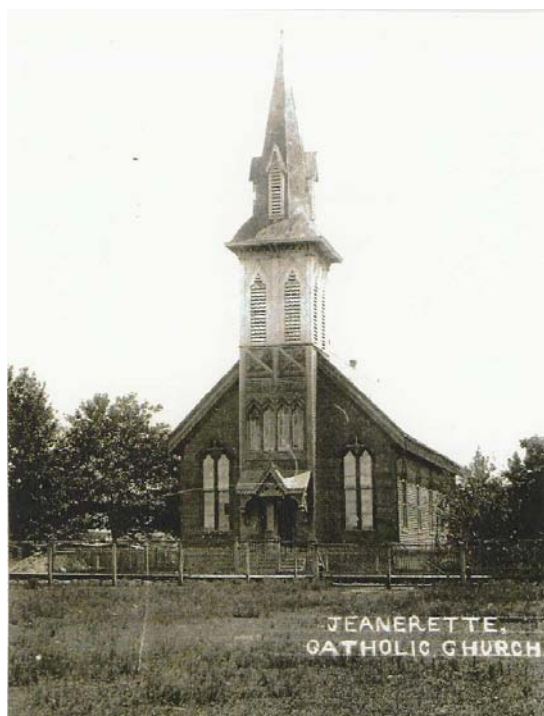
LANDMARK SPOTLIGHT

ST. JOHN THE EVANGELIST CATHOLIC CHURCH



The historic spotlight for this issue focuses on the St. John the Evangelist Catholic Church located on the corner of St. Nicholas and Church Streets. The St. John Parish will celebrate its 125th year in January of 2004.

The church was established on January 12, 1879 by Rev. John D. Flanagan. Father Flanagan conducted services in private homes until the first church was constructed a few years later. The original structure was wooden and was completed in the early 1880s.



The first church building, built on the same site as the present church, was destroyed prior to 1907.

The church, as it stands today, pictured in the column to the right, was begun in 1907 and construction was completed in 1909 through the legendary efforts of Rev. Michael Bardy who served as pastor of the parish for 43 years, the longest pastoral appointment in the history of the Lafayette Diocese.

Present day St. John The Evangelist Catholic Church building located on St. Nicholas Street.

Louisiana Historic Marker in the foreground of the above picture commemorates the founding of the church parish



and the construction of the church building as it stands today.

Financial Report

During the 2003 year, the Society received \$16,154.36 in cash memberships and contributions. In addition, in kind donations amounted to \$94,365.95 which included the First National Bank's donation of mortgage notes on the vacant lot on Main Street, professional services donated by Wayne M. Labiche Engineering and members of his staff, the law firm of Allain & Bellefontaine, and the donation of antique display cases by Mary Roane. Total revenue amounted to **\$110,520.31**.

Expenses totaling **\$7,764.86** included insurance in the amount of \$1,797.25, clerical expenses of \$3,000.00, court filing fees for property acquisition, accounting expense, and paper, postage, and office supplies for the newsletter, correspondence and related record keeping.

The balance of cash in the bank as of December 31, 2003 was **\$78,097.25**.

President's Open Letter to Members and Supporters

Greetings to all Landmark members and supporters!

I am writing this letter on February 12, 2004 to be included in the December 2003 newsletter. The first thing I must do is explain why this newsletter is so late. There are two reasons. The first has to do with my personal and professional schedule. During the course of last year, my work on Society business occupied a great deal of my time. There were many important things we needed to accomplish, among which were: the acquisition of the home property and the vacant lot, both of which has now been completed; work with our architect and on the grant from Atchafalaya Basin Program; preparation and drafting newsletters; preparing and hosting board meetings and the annual meeting in September; and numerous administrative matters which needed attention. My time on this project is a part of my personal contribution to the project, and the value of that time is being included in the total of contributions to the Society which can be matched for grant purposes. As an important aside, I want to point out that although my partner John Bellefontaine performs no services for the Society, he makes an important contribution to the effort by allowing me to devote my time and the time and resources of our office to this work, and this is no small contribution on his part. While I am happy to continue working on this project, I do have professional commitments which must be fulfilled and it has been necessary to attend to these obligations to the exclusion of Society business over the last two months.

The second reason for the lateness of the newsletter is that we lost our excellent secretary Nancy in December. Nancy got married and moved to Baton Rouge. We are happy for her, but her departure has left a void in our office, and specifically at the Landmark desk, that we have been unable to fill. Nancy handled all the hundreds of little daily tasks which made it possible for me to do what needed to be done. Additionally, she made the computer and printer do what we needed in order to produce this newsletter and ensured that it was mailed timely to all of you. I am happy to say that Nancy has graciously agreed to return for one or two days to help me get this copy of the newsletter out and that is the reason you are reading it now.

For the future, the board has been talking about setting up a web site and putting the newsletter on the web site. This is an excellent idea and we are looking into it now. It will save the Society a lot of money and time in the future and will allow you to view new developments as well as all past newsletters when it is complete. Once we have completed the web site, we will be able to email to each member a notice of publication with a link to the web site. Therefore, please send us your email address so we can add you to the email list.

Finally, I want to encourage you to renew your membership in the Society. This year will be a critical year for us. When the grant from DNR is received, we will be working very hard to plan and develop the house restoration and other project improvements. At the same time, we will be attempting to convince the State that Phase II of the project, full funding of the improvements, is worthy. To do this, we need to demonstrate that we have continuing support for the project from all our members and supporters. In addition, we will need help to find someone to replace Nancy, who can take care of the day-to-day business of the Society. We are looking for someone to fill this position. If you know of anyone who has the time and would be the right person for the job, please let us know.

I want to thank you all for your support and patience. Hang in there and keep that support coming. We will continue working to make our project a reality, and with your help, I am sure we will accomplish our goals.

Sincerely,
Raymond E. Allain

PLEASE RENEW YOUR LANDMARK SOCIETY MEMBERSHIP TODAY !

We are very grateful for your past support. The donations and memberships purchased in the first year of the Society's existence have made it possible for us to make incredible progress. But we are entering a critical phase of the project now and we need for you to renew your membership by sending a check for 2004 today. To ensure that our grant applications are favorably considered, we must show continued local support for the project. Please help us make this project a reality by renewing now.

**DONATION OF ANTIQUE DISPLAY CASES GRATEFULLY ACCEPTED!**

Dana Bourgeois, Chairperson of the Museum Planning and Acquisitions Committee, meets with Mary Roane to receive her donation of antique display cases for the Hewes Museum. The two cases, one of which is pictured to the left, originally belonged to Larroque Pharmacy, have substantial value as antiques, but will also provide elegant space for the display of historic artifacts in the museum portion of the Home.

The Jeanerette Landmark Society is dedicated to the Preservation of Historic Landmarks - Promoting Education and Appreciation of History - and Improving the Quality of Life in the community of Jeanerette.